

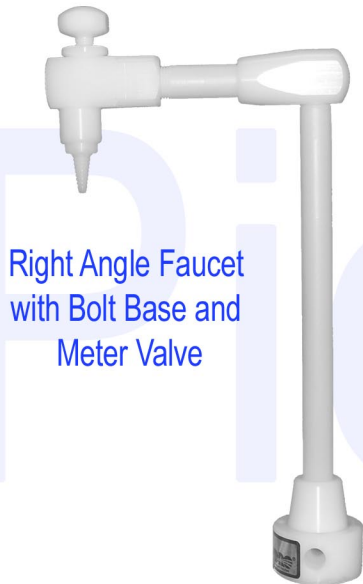
Picotap[®] Laboratory Faucets Right Angle



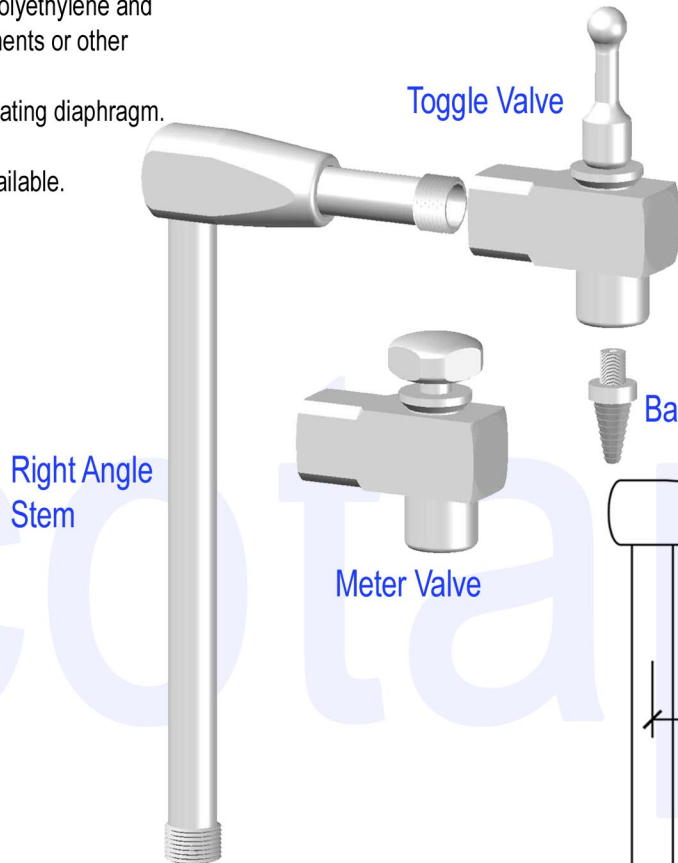
Specialists in
Ultrapure Water
since 1967

Description

- Available with bolt base, threaded shank base, or through-the-wall base.
- Available with meter valve for flow control or self-closing toggle valve for variable control with hand pressure.
- Available with barbed or smooth tips.
- Constructed of ultra high molecular weight (UHMW) polyethylene and polypropylene for high purity. No glues, sealants, pigments or other additives are used.
- Meter and Toggle valves have a patented non-particulating diaphragm.
- All faucets are pressure tested to prevent leakage.
- All faucet fittings are NPTF standard. Other fittings available.
- Competitive pricing on all models.



Right Angle Faucet with Bolt Base and Meter Valve



Right Angle Stem

Toggle Valve

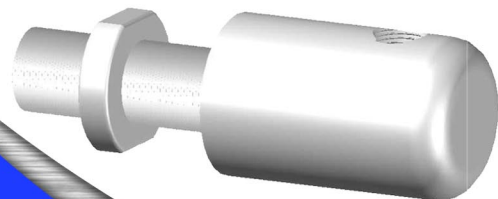
Meter Valve



Smooth Tip



Barbed Tip



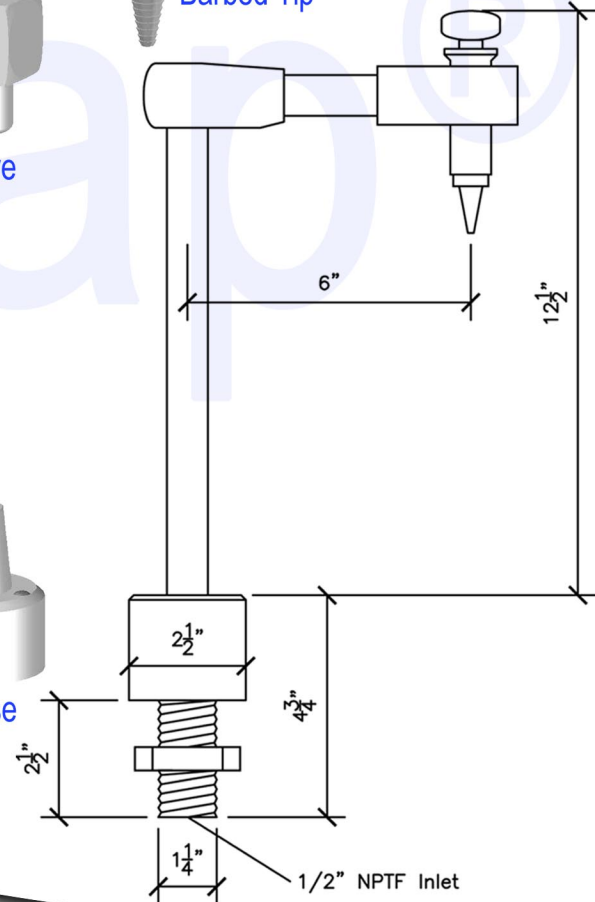
Through the Wall Base



Threaded Shank Base



Bolt Base



Applications

- Pharmaceutical
- Biotech
- Research
- Academic
- Medical
- Industrial

www.hydroservice.com
1-800-950-7426

Durham, NC
North & South Carolina
Southern Virginia
Georgia
919-361-5188
1-877-924-9376

Gaithersburg, MD
Maryland, Washington DC
Southern Delaware
Northern Virginia
301-770-2120
1-888-855-0880

Levittown, PA
Pennsylvania
Southern New Jersey
Northern Delaware
215-547-0332
1-888-848-6226

Garfield, NJ
New Jersey
New York
973-777-3363
1-888-853-1222

Wallingford, CT
Connecticut
Massachusetts
The Northeast
203-265-3995
1-866-302-2014